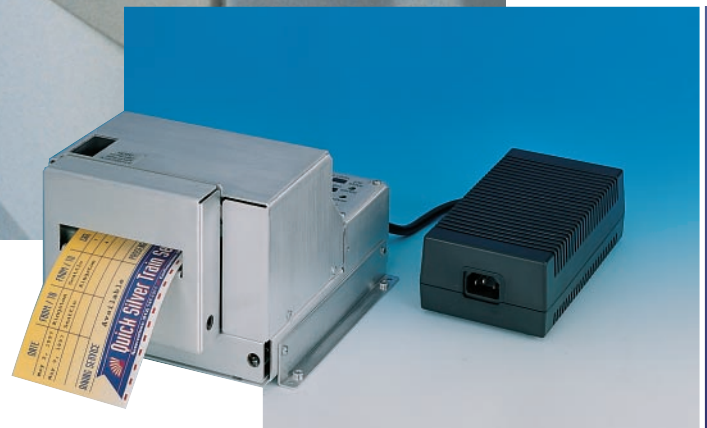


cLTx SERIES *Kiosk Ticket Printers*



**Solutions For
On-Demand Ticketing**



PRACTICAL AUTOMATION, INC.

Ticketing Solutions For The OEM & System Integrator

CLTx SERIES Kiosk Ticket Printers

Features

- Direct thermal technology for long life and low maintenance
- Integral cutter
- Compact size
- Automatic ticket loading
- Ticket jam detector
- Optional WYSIWYG Windows® driver

Kiosk Applications

- **Advance Ticketing For:**
 - Sporting events
 - Theater
 - Cinemas
 - Special events, etc.
 - General admission
- **Retail Ticketing For:**
 - Coupons
 - Vouchers
- **Transportation Ticketing For:**
 - Air, rail, ship, bus, etc.
 - Parking

Designed For Easy Integration

The cLTx series is a modular ticket printing system designed for easy integration into an ATM (automatic ticket machine) kiosk. The cLTx consists of two modules: a printer module and a power supply module. The printer module combines a thermal print mechanism, auto-cutter, and control electronics in a compact, lightweight package suitable for fixed base or slide mounting. Operating power is provided by a universal input power supply module. A four foot power interconnect cable allows the power module to be placed in a remote location for overall simplified packaging.

*Straight-Thru Ticket Path
Minimizes Jamming.
Printer Module cLTx Series*



*Power
Supply Module
PS55-14*

Choose From Two Models

The cLTx is offered in two versions for standard ticket widths of 2 inches and 3.25 inches. Ticket loading is automatic through the rear of the printer. The ticket path through the printer module is essentially flat and straight. In the event of an obstruction, a jam detector will initiate a clear cycle. If the obstruction remains after three tries, the printer goes off-line and a status signal is available for the host system.

Easy To Program

The control electronics utilizes a user friendly programming language. There is a choice of twelve resident fonts and seven resident bar codes that can be expanded and rotated. PCX file-supported graphics and line and box drawing can be used to enhance the appearance of the printed ticket. A parallel interface is standard, however a serial RS 232C interface is available as an option.

Drivers

The cLTx is also supported by an available Windows®-compatible driver. This unique driver is designed to take advantage of the flexibility and easy programming features of Windows, including True Type fonts and graphics.

Ticket Printing vs. Roll Paper Printing

The defining characteristics of a kiosk ticket printer are its ability to use heavy ticket stock and a fast print speed. The cLTx uses .0075 inch thick fanfold and perforated ticket stock. A typical 5.5 inch long ticket can be printed, cut and ejected in approximately two seconds. These characteristics contrast with conventional kiosk printers that are typically slower and designed to use thin paper packaged in rolls.

Sample Kiosk Ticket Printer Capabilities...

Choose from two standard ticket widths...
2" or 3 1/4".

DATE	FROM / TO	FROM / TO	CAR	SEAT	TIME DEPART	TIME ARRIVE
May 2, 1997	Kingston	Seattle	7	17A	8:02am	11:07am
May 9, 1997	Seattle	Kingston	4	14B	4:07pm	7:12pm
DINING SERVICE Available			PASSENGER I.D. [Barcode]			

Quick Silver Train Service
Reservations: (912) 747-1311 ■ Confirmations: (912) 747-2214

Variable ticket length.
2" minimum to 10.1" maximum.

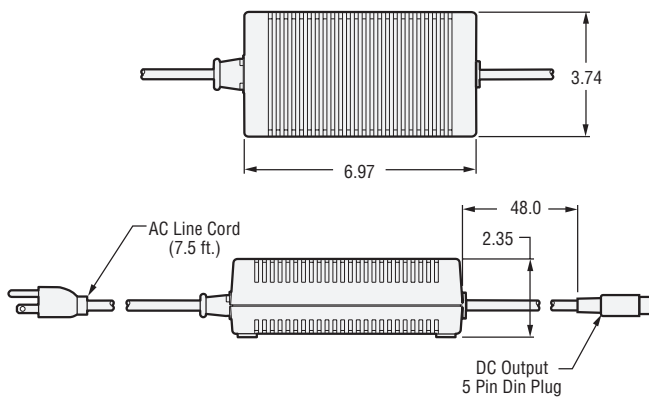
Print a variety of fonts at rotated increments with 200 dpi resolution

Print a variety of bar codes with 200 dpi resolution

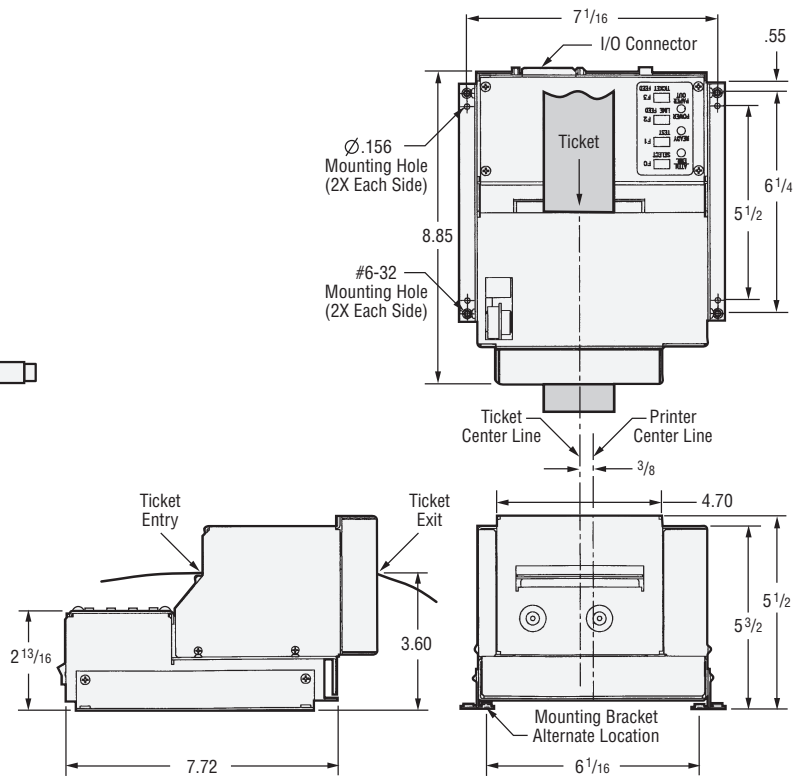
Other print capabilities:

- Line & box drawings
- Inverted characters
- Logos, graphics

Outline Dimensions



**Power Supply
Module PS55-14**



**Printer Module
cLTx Series**

Specifications

Printing Method:	Direct thermal
Printhead:	
Dot Density	203.2 DPI (8 dots/mm)
Dot Size	0.005 in. (0.125 mm)
Ticket Width:	
cLTx-2002	2.0" ±0.016 (50.8 mm ±0.41)
cLTx-2003	3.25" ±0.016 (82.6 mm ±0.41)
Print Width:	
cLTx-2002	2.0" (50.8 mm) max., 1.8" (45.7 mm) typ.
cLTx-2003	3.15" (80 mm) max., 3.05" (77.5 mm) typ.
Ticket Length:	2.0" min.; 10.1" max.
Print Length:	10.1" max.
Print Speed:	3.5 in/sec (88.9 mm/sec) max.
Paper Feed:	Friction
Detectors:	Paper/registration (photo optical), Printhead temperature (thermistors), Printhead up detect (mechanical switch), Paper jam detect (mechanical switch)
Indicators:	Power/Paper, Attention/Error, Ready
User Switches:	Power On/Off, Select(F0), Test(F1), Line Feed(F2), Ticket Feed(F3)
Power Requirements:	Provided by model PS55-14 external power supply.
Ticket Separation:	Auto Cutter

Resident Fonts:	5 x 7, 8 x 16, 17 x 31 (OCRA), 17 x 31 (OCRB), 5 x 9 (OCRA), 30 x 52 (OCRB), 18 x 30 (Courier), 13 x 20 (OCRB), 25 x 41 (Bold Prestige), 25 x 49 (Script), 46 x 91 (Orator), 20 x 40 (Courier)
Resident Bar Codes:	Code 39, Interleaved 2 of 5, EAN 13, EAN 8, UPC, USS-CODABAR, and Code 128, normal or expandable, with or without human readable interpretation line
Character Sets:	128 element standard ASCII, German character set, OCRA, OCRB, and British pound sign
Graphics:	Dot addressable, graphic and box and line draw, PCX file support.
Programmable Features:	Character size, character rotation, inverse printing
Image Data RAM:	1/2 meg. byte
Input Data Buffer:	22 kb circular
Interface:	
Parallel	Centronics compatible parallel RS232C; 2400, 4800, or 9600 Baud
Serial*	Transparent mode operation
Auxiliary Serial*	BUSY or Xon/Xoff
Flow Control	Odd, even, or none
Parity	*With Optional Adapter

System Setup Parameters:	User-friendly switch panel entry of setup data into EEPROM memory
Environment:	
Temperature	+5°C to +40°C operating -5°C to +65°C storage
Humidity	20 to 85% relative, non-condensing
Regulatory Compliance:	
EMI	FCC Class A compliance
Safety Listings	UL-1950, CAN/CSA C22.2 No. 950, IEC-950. CE. compliant
Printer DC Input Voltage:	24 V DC
Printer DC Input Current:	8 amps peak (LTx 2002) 11.1 amps peak (LTx 2003) 2.3 amps average (long term)
PS-55-14 Power Supply	
AC Power Input	85 to 264 VAC, 47 to 65 Hz
AC Input Current	1.5A (rms) at 115 VAC 0.9A (rms) at 230 VAC
Output Voltage	24 VDC ±3%
Output Power	55 watts max. average
Typical Life:	
Printhead	500,000 (typical 5 1/2" ticket)
Cutter	500,000 cuts
Weight:	
Printer Module	5.36 lbs. (2.43 kg)
Power Supply	1.65 lbs. (.749 kg)

See Ordering Information on next page

Ordering Information

Product Base No. **cLTx 200** Includes printer with external power supply and 115V line cord.

cLTx 200 -

Suffix

2 = 2" ticket width
3 = 3.25" ticket width

Extension

None = parallel (standard)
S = serial adapter (SI9-LP)
E or SE = parallel or serial printer for 230 VAC w/o line cord
R or SR = replacement printer, parallel or serial, w/o power supply

Example:

cLTx2002-SE = cLTx with PS55-14, 230VAC Power Supply, 2.00" ticket width, serial interface

Separate Components:

PS55-14: Universal Input Power Supply (85 - 264 VAC) with 115 VAC line cord
PS55-14E: Universal Input Power Supply (85 - 264 VAC) without line cord
SI-9LP: Serial Interface Adapter with Low Paper Input Connector

Ticket Stock:

TS-725: 2.0"W x 5.5"L, pkg 1000/bundle, fanfold
TS-724: 2.0"W x 4.0"L, pkg 1000/bundle, fanfold
TS-735: 3.25"W x 5.5"L, pkg 1000/bundle, fanfold
TS-732: 3.25"W x 2.0"L, pkg 3000/bundle, fanfold

Accessories:

LS-09: Serial Data Cable (DB-9P to DB-9S One to One Wiring)
LP-25: Parallel Data Cable (DB-25P to DB-25S One to One Wiring)

Other Practical Automation Printer Solutions...



Model μLTx

- Compact Size
- Cost Effective Ticketing Solution

Model ETX

- Internal Ticket Storage
- Ticket Cut & Eject



Model pETX

- Vertical Mount
- Cinema Applications



PRACTICAL AUTOMATION, INC.

The Alinabal Group of Companies
45 Woodmont Road, P.O. Box 3028, Milford, CT 06460 ■ Phone: (203) 882-5640 ■ FAX: (203) 882-5648

Printed in USA
5972.5m